

## BRIDGEPORT (TRADITIONAL)

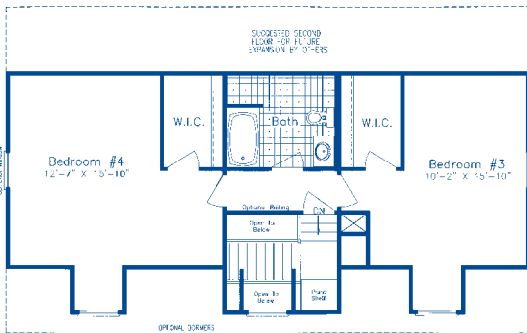
Approx. First Floor Area 1232 sq. ft.  
 Approx. Unfinished Attic Space 664 sq. ft.  
 Approx. Total Area 1896 sq. ft.

Approx. Overall Dimensions  
 28'-0" x 44'-0"

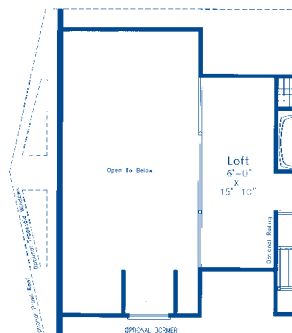
## BRIDGEPORT (CONTEMPORARY)

Approx. First Floor Area 1232 sq. ft.  
 Approx. Unfinished Attic Space 512 sq. ft.  
 Approx. Total Area 1744 sq. ft.

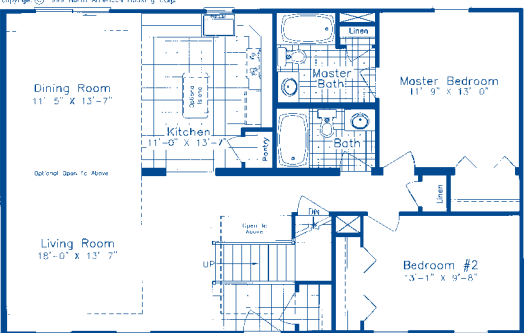
Approx. Overall Dimensions  
 28'-0" x 44'-0"



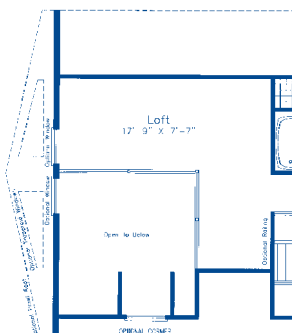
STANDARD UNFINISHED ATTIC SPACE  
 OPTIONAL 4-BOX CAPE



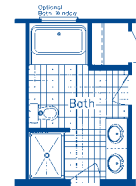
OPTIONAL 2nd FLOOR LOFT #1



OPTIONAL SLIDERS  
 STANDARD BASEMENT PLAN



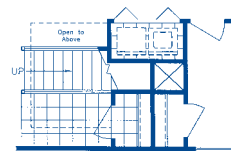
OPTIONAL 2nd FLOOR LOFT #2



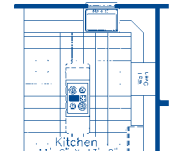
OPTIONAL BATH #1



OPTIONAL BATH #2



CRAWL SPACE OPTION



OPTIONAL KITCHEN w/COOKTOP

Independent Builders are not affiliated with North American Housing Corp.

Frederick  
 5724 Industry Lane  
 Frederick, MD 21704  
 301-694-9100

Boones Mill  
 P.O. Box 25  
 Boones Mill, VA 24065  
 540-334-5000

Visit us on the  
 World Wide Web!  
<http://www.northamericanhousing.com>

